



# ***Product Catalogue***



# *FRTT Rooftop Air Handling Unit*



## General Features



Rooftops are packaged air conditioners that can cool or heat/cool the room air, cool the room air in summer with cooling/DX coil and heat the room air by means of a direct expansion refrigerant systems,

Rooftops can meet the fresh air of the space and can perform all heating, cooling and ventilation process in a complete single unit.

Fantürk FRTT series is designed for use in areas that only need cooling (Tropical) and designed for areas that need heating and cooling. FRTT series is offered with many capacity options according to the size of the environment to be air conditioned.

Ana kullanım alanları geniş ticari binalar, iş merkezleri, havalimanları, restoranlar, büyük mağazalar, sinema ve tiyatro salonları, konferans salonları, endüstriyel binalar ve lojistik merkezleridir.

Usage areas are large commercial buildings, business centers, airports, restaurants, large stores, cinema-theater halls, industrial buildings, logistics centers.

## Working Limits

Cooling	Outside Temperature		Inside Temperature	
	Dry Bulb Temperature (°C)	Wet Bulb Temperature (°C)	Dry Bulb Temperature (°C)	Wet Bulb Temperature (°C)
Minimum	15	7	18	14
Nominal	35	24	27	19
Maximum	52	27	36	24

# Features

## FRTT-Tropical Type Fanturk Rooftop

- High efficiency and quiet running fans
- Compact design
- Automatical control systems
- Plug and run

## Compressor

- High efficiency
- Quiet running
- Fewer moving parts
- Compact design

## Coils

- Copper pipe, aluminum fin
- High temperatur and humidity efficiency

## Filter

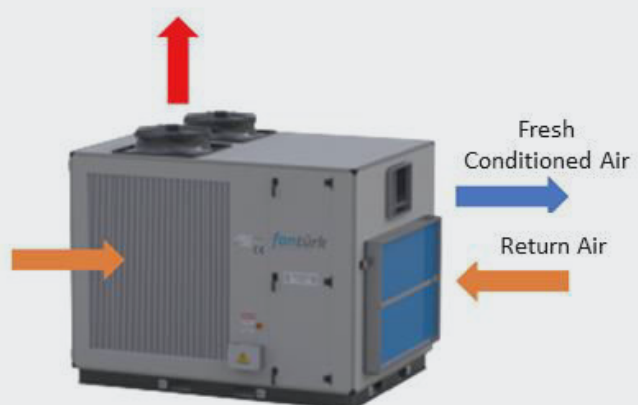
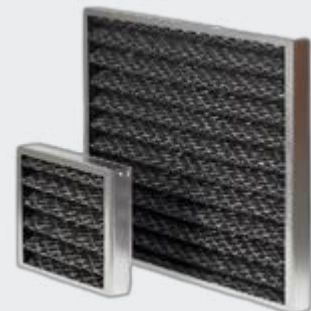
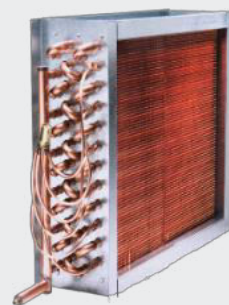
- Energy saving
- Large filtration area for long servise time

## Case

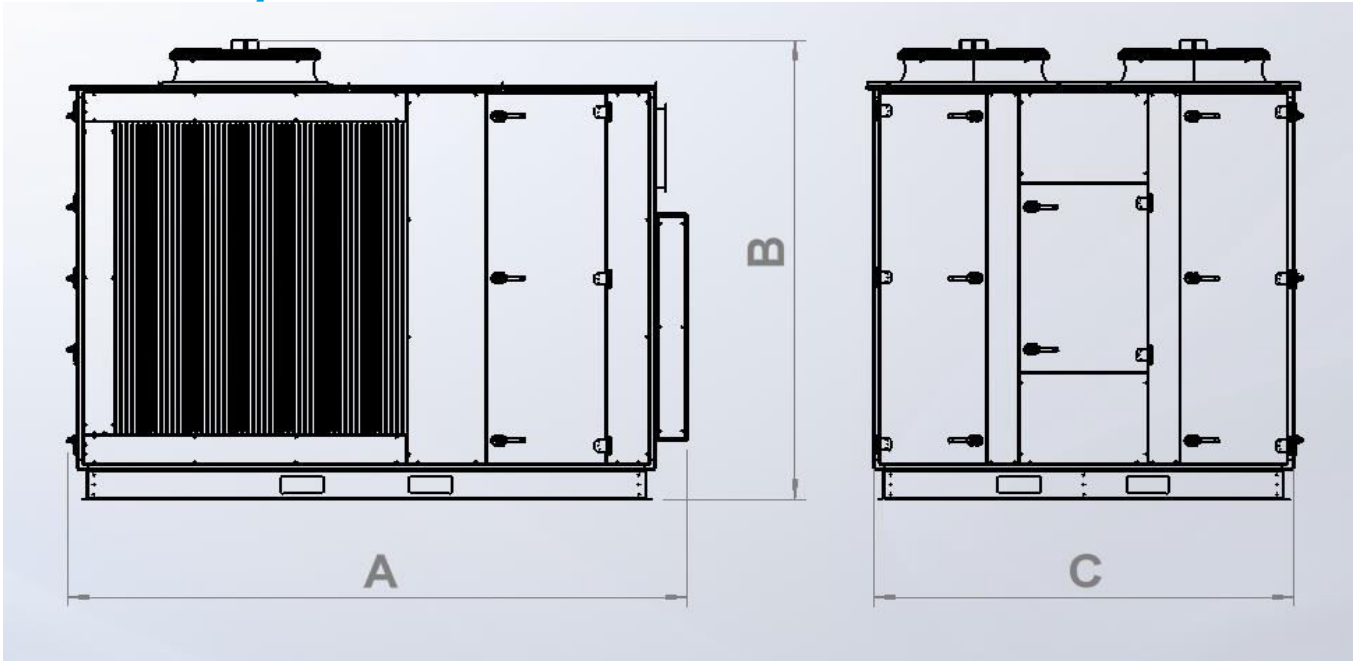
- Electrostatic powder paint galvanized sheet metal
- 50 mm insulation
- Ease of maintenance and service

## Options

- Economizer
- Bag filter cell
- Electric heater
- Electronic expansion valve
- Filter pollution sensor
- CO2 sensor
- Enthalpy control
- Condenser fan speed control
- Smoke detector



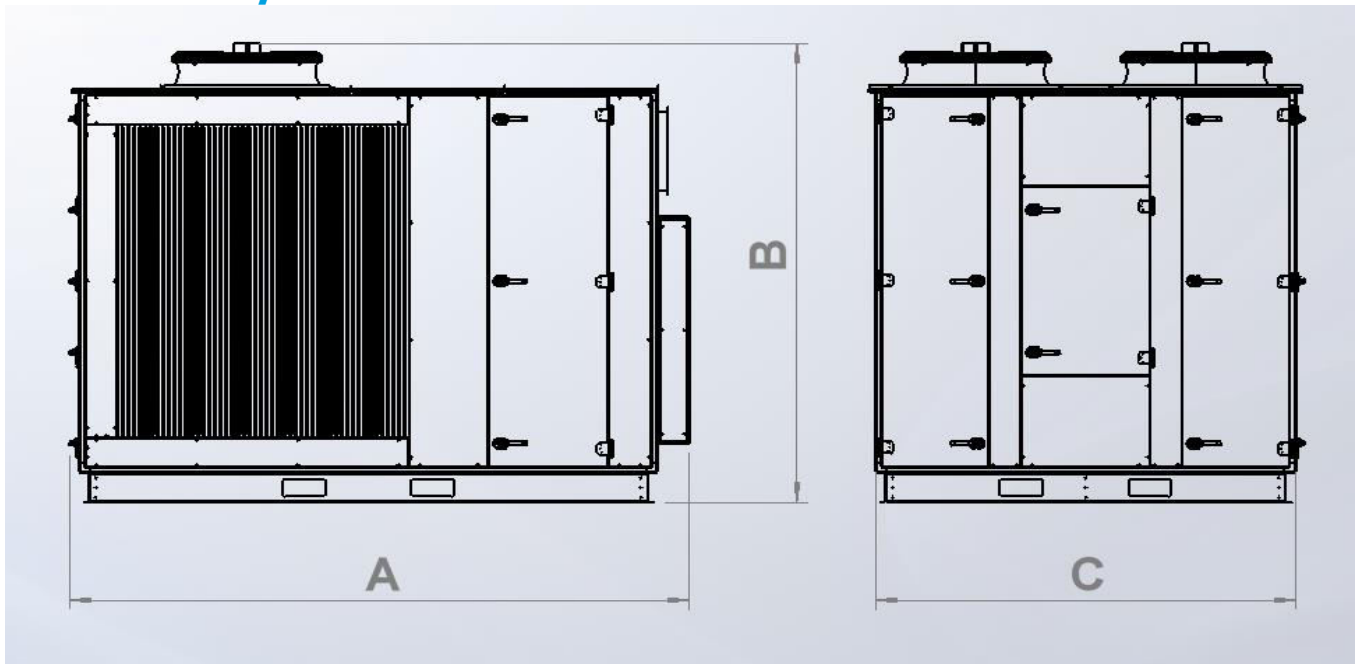
## Technical Specifications



MODEL		FRTT-018	FRTT-023	FRTT-032	FRTT-037	FRTT-040	FRTT-046	FRTT-056
Air Flow Rate	[m <sup>3</sup> /h]	3600	5000	5850	6600	7800	10000	10500
External Pressure	[Pa]	300	300	300	300	300	300	300
Cooling Capacity [1]	[kW]	18	23	31	36	40	46	55
Total Power [1]	[kW]	6	9	11	12	14	18	20
Cooling Capacity [2]	[kW]	8	19	25	30	33	38	46
Total Power [2]	[kW]	8	10	13	14	17	21	24
Cooling Capacity [3]	[kW]	13	17	22	26	29	33	40
Total Power [3]	[kW]	9	11	14	16	19	23	26
Condenser Fan Type		Aksiyel						
Condenser Fan Quantity		1	1	1	1	2	2	2
Compressor Type And Quantity	[kW]	Scroll-1	Scroll-1	Scroll-1	Scroll-1	Scroll-2	Scroll-2	Scroll-2
Weight	[kg]	400	415	472	550	610	670	740
Electrical Information		380-400V/3 ph./50 Hz						
A	[mm]	1600	1600	1400	1900	1900	2100	2250
B	[mm]	1100	1400	1400	1500	1600	1900	1900
C	[mm]	1400	1400	1600	1700	1750	1800	1850

- [1] Outdoor Temp. 35°C KT, Indoor Temp. 26,7°C KT/19,4°C YT
- [2] Outdoor Temp. 46°C KT, Indoor Temp. 26,7°C KT/19,4°C YT
- [3] Outdoor Temp. 52°C KT, Indoor Temp. 26,7°C KT/19,4°C YT

## Technical Specifications



MODEL		FRTT-062	FRTT-072	FRTT-081	FRTT-092	FRTT-111	FRTT-124	FRTT-152
Air Flow Rate	[m <sup>3</sup> /h]	11500	13000	15000	16800	19000	21500	25000
External Pressure	[Pa]	300	300	300	300	300	300	300
Cooling Capacity [1]	[kW]	62	72	80	92	111	124	151
Total Power [1]	[kW]	26	26	27	32	40	44	56
Cooling Capacity [2]	[kW]	51	59	66	77	103	102	126
Total Power [2]	[kW]	30	30	33	37	53	53	66
Cooling Capacity [3]	[kW]	45	53	58	67	81	90	112
Total Power [3]	[kW]	33	37	37	41	58	58	72
Condenser Fan Type		Aksiyel						
Condenser Fan Quantity		2	2	2	2	4	4	4
Compressor Type And Quantity	[kW]	Scroll-2	Scroll-2	Scroll-2	Scroll-2	Scroll-4	Scroll-4	Scroll-4
Weight	[kg]	820	940	970	1200	1350	1450	1750
Electrical Information		380-400V/3 ph./50 Hz						
A	[mm]	2300	2400	2600	2700	3500	3500	3500
B	[mm]	1900	1950	1950	2100	2200	2300	2300
C	[mm]	1900	2000	2100	2250	2350	2450	2550

- [1] Outdoor Temp. 35°C KT, Indoor Temp. 26,7°C KT/19,4°C YT
- [2] Outdoor Temp. 46°C KT, Indoor Temp. 26,7°C KT/19,4°C YT
- [3] Outdoor Temp. 52°C KT, Indoor Temp. 26,7°C KT/19,4°C YT

*Minarelicavus OSB District 202. Street No: 19 Nilüfer/Bursa Turkey  
T: 90(224)482 50 95 E: info@fanturk.com.tr*

***fanturk.com.tr***